

Single beam survey data of feature used for HYPACK timing field test

### ATTENTION HYPACK USERS WITH CEE ECHO SOUNDERS!!

The CEESCOPE and CEE ECHO are able to add a precise GNSS time tag to every data packet, whether recorded inside the echo sounders or by connected acquisition software. Especially for USV applications where data are telemetered, the time tag is an important tool to maximize dataset quality. It is important to ensure the acquisition software is set up to use the time tags properly. Scroll down for links to documents describing an important change to the way **HYPACK 2022 onwards** handles the CEE format data output. Incorrect HYPACK setup will introduce small, possibly unrecognized latency errors or much larger very obvious time offsets. This will happen when moving from one version to a newer one, while still using the older driver configuration.

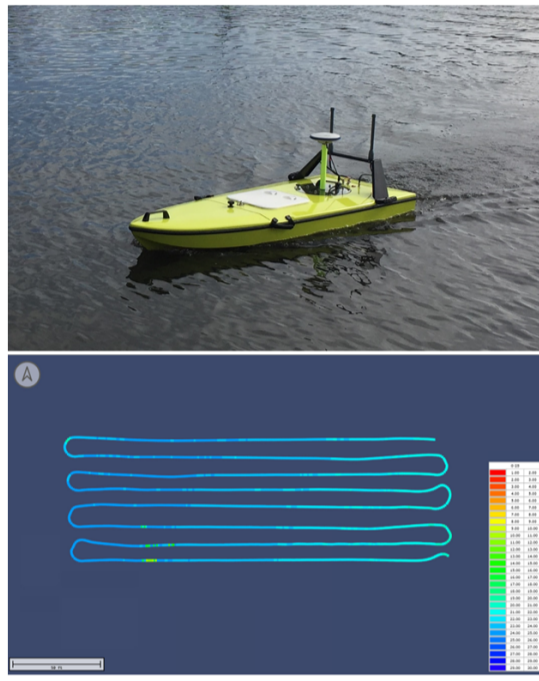
### Customer News



#### All Electric Shallow Water Surveying

In Germany, surveyors at Consulting Engineers Saam LLC were looking for a simple and reliable echo sounder for their Trimble total station S7 and GNSS setup. Often working around bridges, they had tried a few different "pole mounted" sounders without finding a reliable solution. The CEE LINE kit was a great discovery according to the new users:

*"Only a low number of artifacts (mostly when quite shallow), very fine! I'm very happy finally having found a reliable equipment for water surveying, thanx to you!"*



#### New USV a Decade Later for Barr Engineering

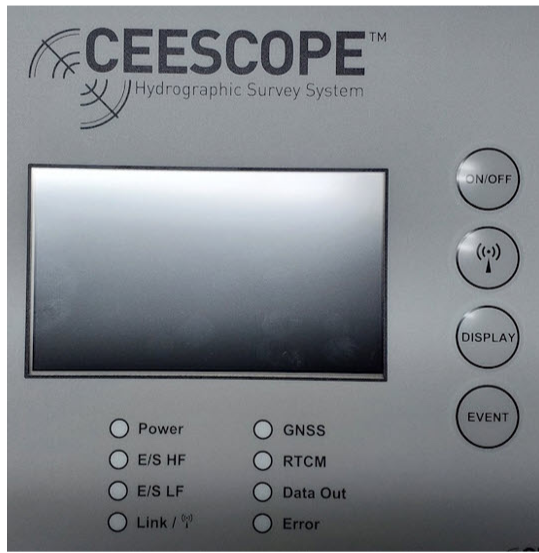
Back in 2013, CEE's Adrian McDonald - before working for CEE - provided Barr Engineering (MN, USA) with a USV incorporating the CEE ECHO sounder and Barr's own Topcon GNSS receiver. The vehicle was carefully maintained in service for a decade, a fairly remarkable feat! In June 2023 the USV finally became unserviceable and was replaced with a top-spec CEE-USV. With a fully integrated RTK GNSS and advanced autopilot managed entirely in Hydromagic, the new system offers a next generation step forward for the surveyors at Barr. This includes the ability to collect a 10ft grid pattern that does not look like spaghetti....

### Product Watch



#### CEE LINK Trade In / Upgrade Offer for CEE-USV

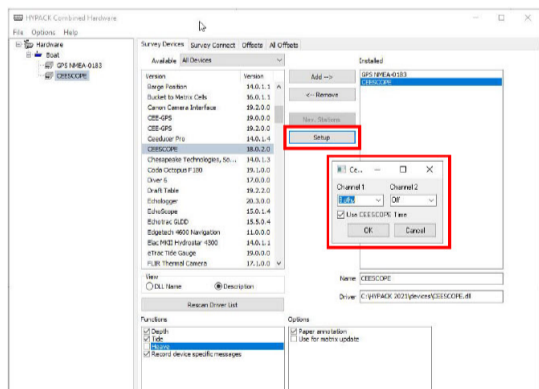
It has been a few years since the original CEE LINK shore radio for the CEE-USV was replaced. The first, fairly short-lived design was prone to low battery conditions if the user forgot to turn it off. The later design eliminates this issue, has an even longer runtime as well as LED indicators and the ability to operate from any external DC source. To trade in your old CEE LINK and get a discounted new one please [CONTACT US](#).



#### NEW Echosounder Panels

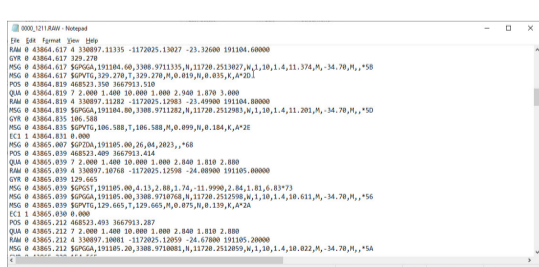
The CEESCOPE and CEE ECHO are receiving new panel switches in 2023. The new switches have a more definite "click" and are rated for even more cycles, reducing the opportunity for failure over the years of use. Potential corrosion on internal connections in tropical environments has been eliminated with a new interconnect type. Good news is the new panel is backwards compatible with all existing echo sounders.

### Software News



#### !! HYPACK Driver Configuration Changes !!

If you are using HYPACK for acquisition with the CEESCOPE or CEE ECHO please consult the new driver setup documents available in the CEE Knowledge Base [HERE](#). The crucial change occurred for the 2022 release. Switching from pre-2022 to 2022 or 2023 WILL REQUIRE a change to how drivers are configured. [CONTACT US](#) if you have questions about this or wish to verify your setup.

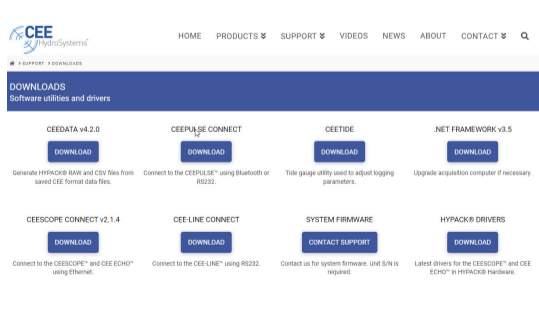


#### How to Test your HYPACK Configuration

If you want to ensure your HYPACK driver setup is optimized, we have written a simple explanation allowing you to test the drivers. Simply collect a short RAW file and inspect the data in Notepad. Download the guide [HERE](#).

#### CEE DATA Update for HYPACK

For HYPACK users needing to transfer data recorded inside the CEESCOPE or CEE ECHO into a project, the latest version of the CEE DATA utility is available to download [HERE](#). HYPACK changed the way echogram data are handled so for 2022 and later releases the new CEE DATA must be used.



#### Contact Us:

**CEE HydroSystems USA, Inc.**  
 701 Palomar Airport Rd, Suite 300  
 Carlsbad, CA 92011 USA  
 t: +1 760 492 4511  
[adrian.mcdonald@ceehydro.com](mailto:adrian.mcdonald@ceehydro.com)

**CEE HydroSystems**  
 1/12 Cecil Rd - Hornsby, NSW 2077  
 Australia  
 t: +61 2 9482 5880  
[sales@ceehydro.com](mailto:sales@ceehydro.com)

