



HYPACK User Conference in Sydney Australia Returns

After a hiatus started as a result of recent COVID years, the annual HYPACK single and multibeam training event returned for the 16th Australian user conference, hosted by CEE HydroSystems. Due in part to rabid customer demand, the three-day event was held at the Hornsby RSL Club, Sydney with HYPACK's John Lindberg in attendance.

Customer News



South America Manned - Unmanned USV Surveys

At a gold mine in South America recently visited during a CEE training trip, the huge tailings impoundment is a natural feature of submerged trees and complex channels and inlets. Operating a USV from the shore is impossible; surveyors operate from a manned boat and drive the boat into the shallow areas the manned boat can't access. To see the boat in action on the pond watch the video [HERE](#).



Jet Ski Surveying the Easier Way

Earlier in 2024 we were over in Florida USA with the University of Florida conducting training on the latest CEE-JET 1600 "add on" kit. Designed for the current SeaDoo line of vehicles, the kit simply bolts or screws into existing attachment points turning a standard PWC into a survey system. With a wireless data link to a waterproof tablet on the handlebars, training is made easy as the trainees can all view the data from the comfort of a regular boat alongside! The CEESCOPE is housed inside a waterproof case, that contains long endurance battery packs and a WiFi access point. The SBG Systems Ellipse motion sensor is custom mounted on the GNSS pole for quality control review and attitude adjustments to sounding data. Learn more about the system and see close up details showing the mounting points and transducer install designed for high-speed operation [HERE](#).



Can You Tow a Jon Boat with a USV?

This is not a question we ever have been asked or indeed had much interest about, but it turns out the answer is YES, and quite easily. Here at this mine in the USA, deposited sediment is so close to the surface the manned boat motor just gets stuck, or things become a big mess. SOLUTION - simply raise the motor and let the CEE-USV tow you along, no problem. Not in the operators manual though.....



Product Watch



AVAILABLE NOW: Another Refurbished USV (USA)

We just received another trade-in USV, that has been refurbished and updated with CEE data systems. The older Z-Boat had its internals removed and replaced so the cable spaghetti-factor is greatly reduced. It would make a great partner for an existing CEE ECHO or CEESCOPE, or it can be supplied with an echo sounder on-board. A huge discount versus a new USV system. [CONTACT our USA OFFICE for details.](#)

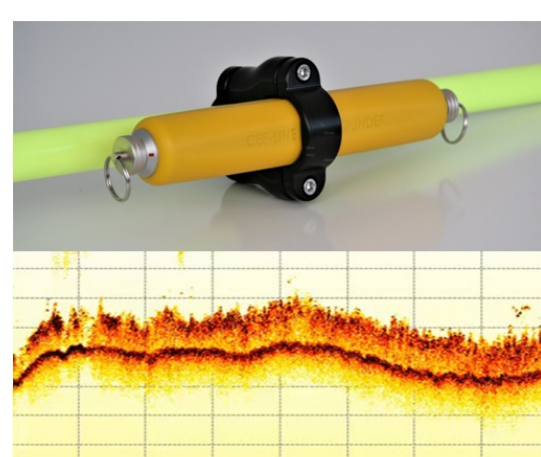
Connecting the CEE ECHO to Emlid Reach GNSS

Low-cost Emlid GNSS receivers are easy to use with the CEE ECHO (or CEESCOPE), utilizing their Bluetooth NMEA data output direct to the echo sounder. Often used by newcomers to hydrographic surveying, we wrote up a setup guide to help connecting the devices. To download the Emlid Reach setup document visit the CEE HydroSystems Knowledge Base [HERE](#).



Water Column Echogram Coming to CEE-LINE

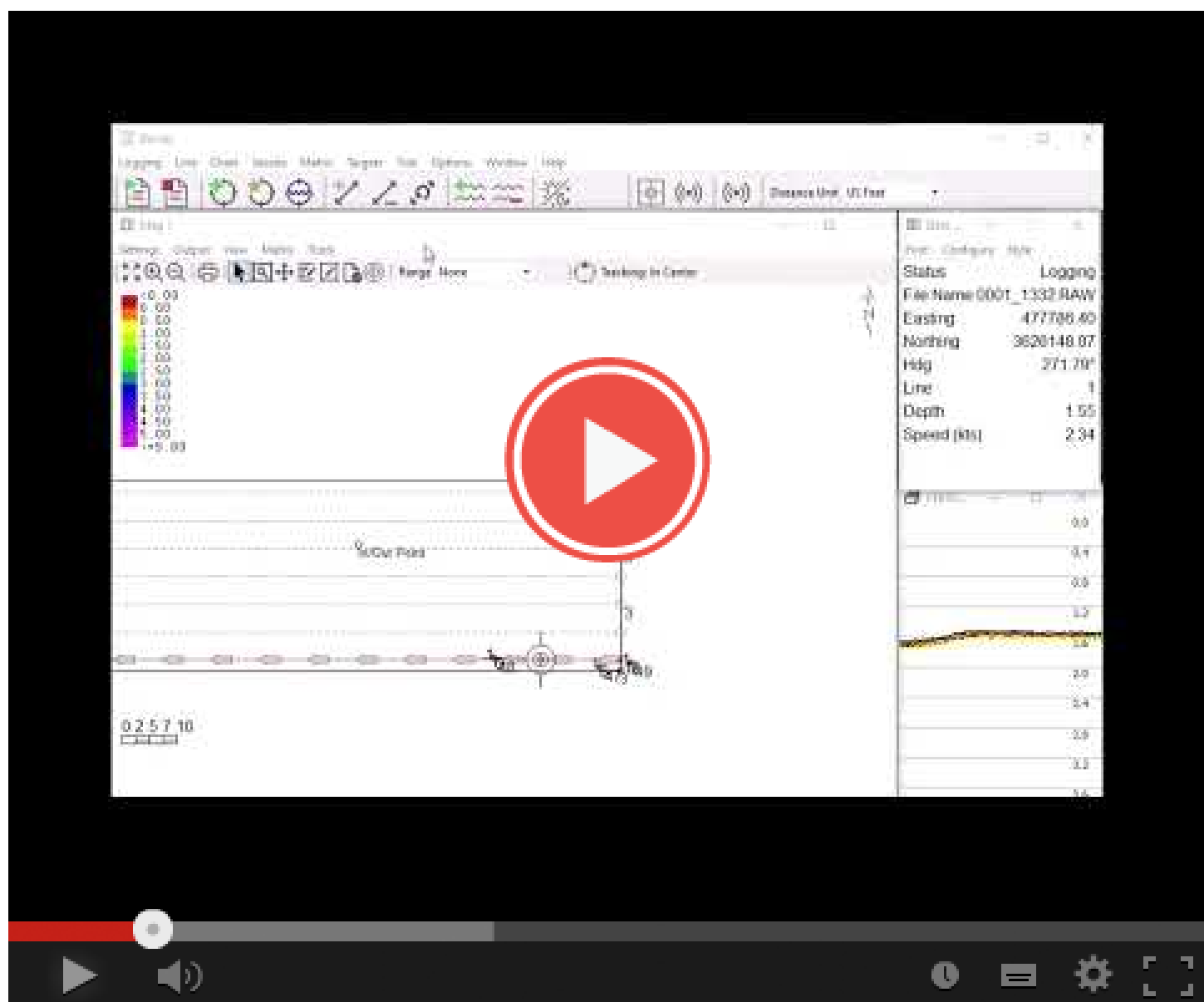
Many users of the CEE-LINE acquire data in a simplified mode using a GNSS data collector. For those wishing to improve their quality control, a high-definition, real-time water column echogram is ready for release. Instead of simply outputting depth points, the complete water column intensity return is available through the USB connection for a radical improvement in available QA/QC versus "digital depth" only. Stay tuned for an official release date.



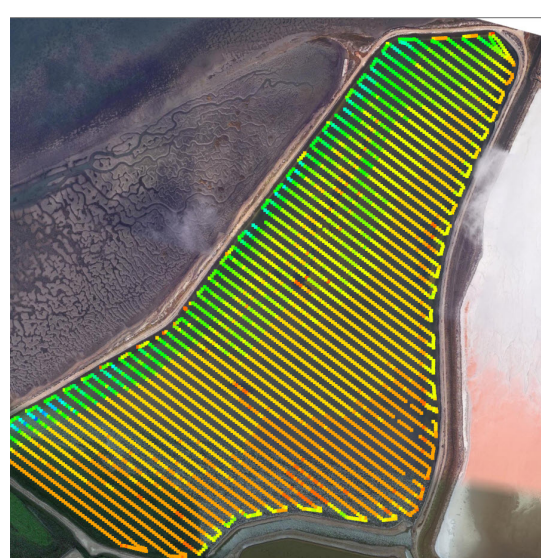
New HYPACK Driver for CEE-USV Autopilot



The Dynautics SPECTRE autopilot system integrated into the CEE-USV now may be operated through HYPACK. With no requirement for any other operating interface, all route planning and uploading may be handled within HYPACK. Simply create the line plan and the driver sends the lines as waypoints to the USV - ready to survey! Watch the video below to see how it works.



Software News



Hydromagic 2024

Instead of release version numbers, Hydromagic now follows HYPACK in naming annual releases. Hydromagic 2024 has been out for a while now. Significant new features for CEE-USV users include a CEESCOPE temperature alarm and on-board USV battery monitoring. [CONTACT US](#) if you want to find out about making use of the new features implemented specially for the CEE-USV.



HYPACK User Conference - Australia

The recent training included a good crowd but still cozy enough for individual questions and issues to be addressed. If you are using CEE equipment with HYPACK and have an issue, please get in touch with us - we can probably get you fixed up.

Contact Us:

CEE HydroSystems USA, Inc.
701 Palomar Airport Rd, Suite 300
Carlsbad, CA 92011 USA
t: +1 760 492 4511
adrian.mcdonald@ceehydro.com

CEE HydroSystems
1/12 Cecil Rd - Hornsby, NSW 2077
Australia
t: +61 2 9482 5880
sales@ceehydro.com