



Industrial Water Survey Solutions

Recent new user startups below highlight the importance of selecting the right survey tool for the job. For this large mine, a manned boat solution would appear to be the easiest approach to avoid the many obstacles and handle the complex shape of the pit. Often this would definitely be true. But with a closer look, the high surrounding terrain elevation allows a great view of the whole survey area making a robotic USV easily the better approach. Our goal is to determine the best approach for each application; often USVs are the first go-to for people contacting us. Sometimes that is appropriate but often it isn't - the coolness factor usually does not trump practicality. Contact CEE to discuss challenging your new survey projects.

Customer News

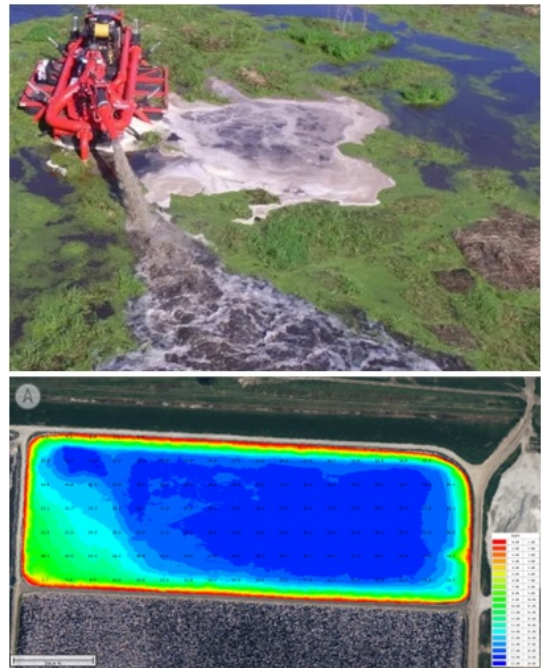


Perfect Data for Aggregate Mine in Los Angeles

The CEE-USV has been put into service on large aggregate mines in California to monitor continuous dredging activity. A recent survey was conducted on a historic mine, that has provided materials to help built the famous L.A freeway network. Checking out the two-day survey showed a total of 4 depth soundings not located on the bottom. The total number of soundings was **723,600**. So that leaves **723,594** good ones. Excellent vindication of the latest CEE tracking algorithms, from 1.0 - 190ft depth. Read a little more about this survey [HERE](#).

NEW! Trimble RTX Perfect for Wastewater Surveys

Industry disrupting lagoon remediation specialists G3 Wastewater Technology / B.A.M.2 Inc offer remarkable cleanup services removing bio sludge. In 2025, G3 improved their survey capability with a professional survey-grade CEESCOPE. Incorporating a Trimble built-in GNSS, the CEESCOPE comes with a year's free Trimble RTX precise corrections allowing G3 to survey to an exact elevation datum. This capability allows direct comparison of sludge levels to as-built elevations and also corrections for water level changes between surveys, taking survey capabilities to the next level. With no base station and no internet! Learn about the new Trimble CEESCOPE specs [HERE](#). Find out about G3's wastewater lagoon solutions [HERE](#). Learn more detail about using RTX with the CEESCOPE [HERE](#).



CEETIDE MAX and MAX-P Tide Stations

We recently brought the temporary tide monitoring version of the new CEETIDE MAX into production and new CEE tide gauges have been popping up around the world. The latest portable unit was used for offshore platform tides in the Gulf region. With installations in Australia, Europe, North and South America, users are benefitting from the highly integrated remote-access tide system that makes setup and operation easy. Download the CEETIDE MAX brochure [HERE](#).



ATTENTION AUSTRALASIAN Surveyors!

Longtime CEE customer IIC Technologies are looking ahead to running their ISBC recognized S-5B and S-8B training programs. Enrolments are NOW OPEN. The S-5B hydrographic course starting Aug 2025 comprises 15 weeks of online training over a 31 week period, followed by a 7-week practical in Mount Maunganui (NZ) starting May 2026. Learn more about the training [HERE](#), or contact hydrographicssurveyor@iicacademy.com.



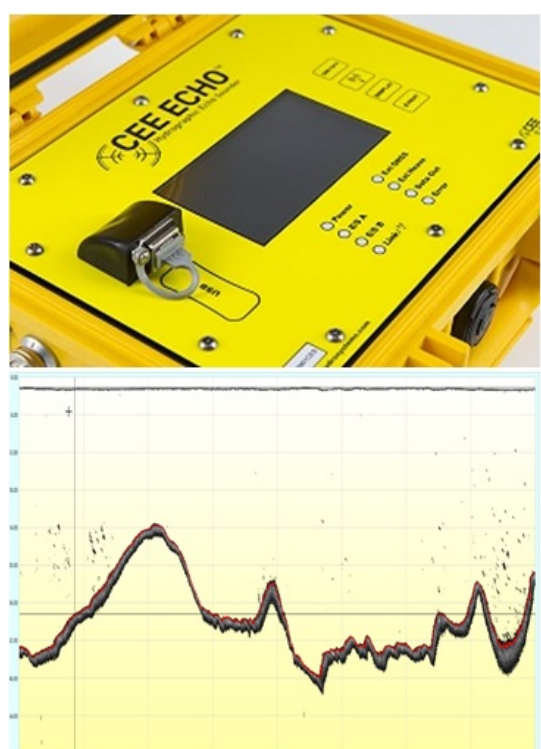
Product Watch

CEESCOPE and CEE ECHO Firmware Updates

The CEESCOPE and CEE ECHO now feature CEE HydroSystems' latest tracking algorithm designed to minimize post-processing:

- Increasing tolerance of surface aeration.
- Increasing tolerance of active boat depth sounder.
- Improved consistency of sub-bottom feature tracking.

The newest tracking algorithm permits the echo sounder to delay searching should the vessel enter water shallower than the echosounder's measurement range. This innovation further minimizes bottom reacquisition times and ensures consistent behavior near the water's edge, adding capability to the existing advanced Kalman Filter tracking algorithms in use on all CEE echo sounders. [CONTACT US](#) for the latest updates.



CEESCOPE with Built-In WiFi for Network RTK

The CEESCOPE already has the ability to manage Power Over Ethernet (POE) devices. Recently this feature was developed to allow users to connect the CEESCOPE directly to Virtual Reference Station network corrections, avoiding the need for a software-based NTRIP service. Additionally, the POE WiFi access point facilitates wireless connection to the acquisition PC.



CEE-USV Autopilot Upgrades

With early CEE-USVs now in operation for up to eight years why not think about upgrading your boat to a robotic system featuring the SPECTRE autopilot if you don't have this capability. The SPECTRE can be retrofitted most easily during a field service visit or at our shop. [CONTACT US](#) to discuss this or other maintenance and service requirements for the old-timers!



Land Surveyors - Elevate your Elevations!

With the new HD digital echogram output on the CEE LINE, switching to a CEE LINE HD and Hydromagic software on a windows tablet / data collector has never made more sense. Moving away from land survey software when running hydro jobs can transform quality control and detail for bathymetry data collection on GNSS data collectors. [CONTACT US](#) to learn how.





Product Promotions

CEE-USV: Ex-Demo System Available

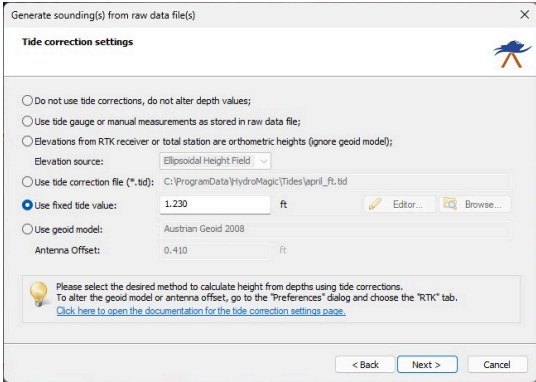
One left! We sold our older refurbished USVs, but our ex-demonstration USV is still available and ready for survey action. We replaced all of the critical parts in a proactive preventative maintenance workup so almost everything inside is new. But with a solid discount. [CONTACT our USA OFFICE to learn more.](#)



Software Update

Hydromagic Tide - Small but Useful New Option

Why did we not add this years ago? Well, we can't answer that but now shifting Hydromagic final sounding depths to a fixed elevation (for example for basic industrial water surveys) is as simple as just entering the water surface elevation number and the magic happens. No more generating tide curves with just two points! [CONTACT US](#) to get the updated version of Hydromagic or download it directly.



Contact Us:

CEE HydroSystems USA, Inc.
701 Palomar Airport Rd, Suite 300
Carlsbad, CA 92011 USA
t: +1 760 492 4511
adrian.mcdonald@ceehydrosystems.com

CEE HydroSystems
1/12 Cecil Rd - Hornsby, NSW 2077
Australia
t: +61 2 9482 5880
sales@ceehydrosystems.com